

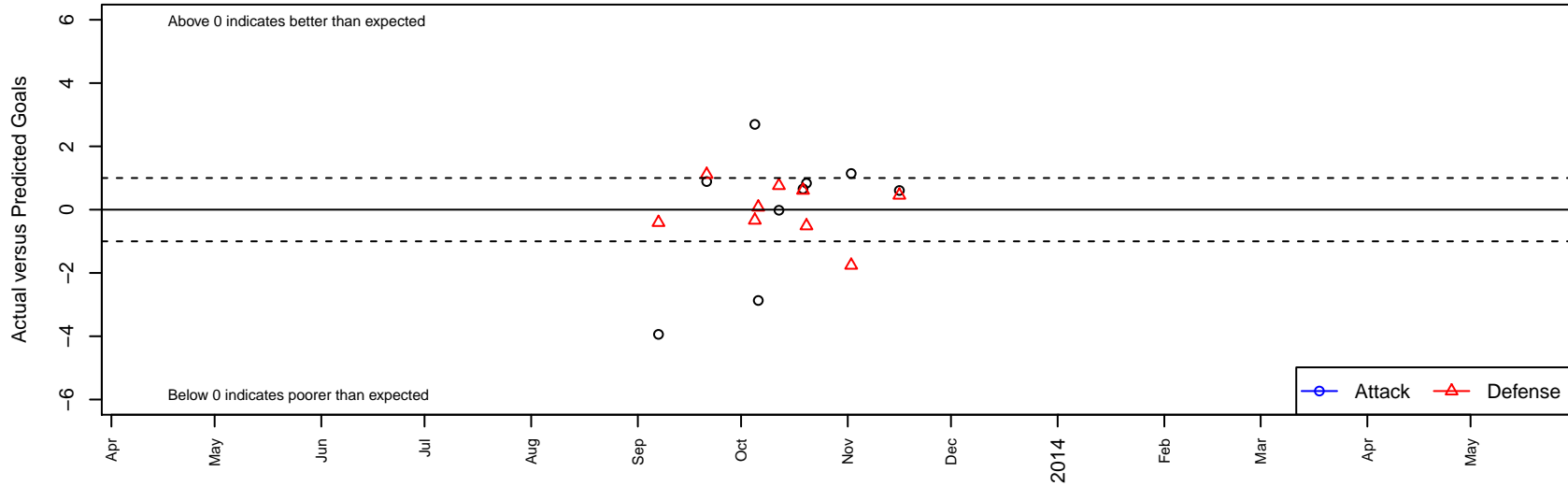
# Force Blue B00

, CAN  
 B00 total strength=1330  
 attack=7.77 defense=5.06  
 alt names used:  
 Force 00B Blue

Venues played:  
 NorCal Premier F11 – Region 2 U13



**Force Blue B00**  
 Dots are actual minus expected GF (blue circles) and GA (red triangles).  
 Blue line is smoothed change in attack strength. Red is smoothed change in defense strength.



	<b>date</b>	<b>home</b>		<b>away</b>		<b>venue</b>	<b>pred.home</b>	<b>pred.away</b>
18486	2013-11-16	Force Blue B00	4	Palo Alto SC 01 Blue B00	0	NorCal Premier FI1 – Region 2 U13	3.39	0.46
16777	2013-11-02	PSA Storm Black B00	3	Force Blue B00	7	NorCal Premier FI1 – Region 2 U13	1.24	5.86
15324	2013-10-20	Monterey County FC United Red B00	1	Force Blue B00	7	NorCal Premier FI1 – Region 2 U13	0.49	6.16
14961	2013-10-19	MVLA SC Vipers Blue B00	0	Force Blue B00	3	NorCal Premier FI1 – Region 2 U13	0.61	2.34
13907	2013-10-12	Force Blue B00	4	Santa Cruz Breakers White B00	0	NorCal Premier FI1 – Region 2 U13	4.02	0.76
13314	2013-10-06	Force Blue B00	2	SMC Star Academy B00	1	NorCal Premier FI1 – Region 2 U13	4.87	1.08
12894	2013-10-05	Red Star SA Red B00	1	Force Blue B00	7	NorCal Premier FI1 – Region 2 U13	0.66	4.30
10998	2013-09-21	Force Blue B00	7	El Camino Real Salinas Galaxy B00	0	NorCal Premier FI1 – Region 2 U13	6.11	1.11
9077	2013-09-07	Force Silver B00	1	Force Blue B00	0	NorCal Premier FI1 – Region 2 U13	0.59	3.94